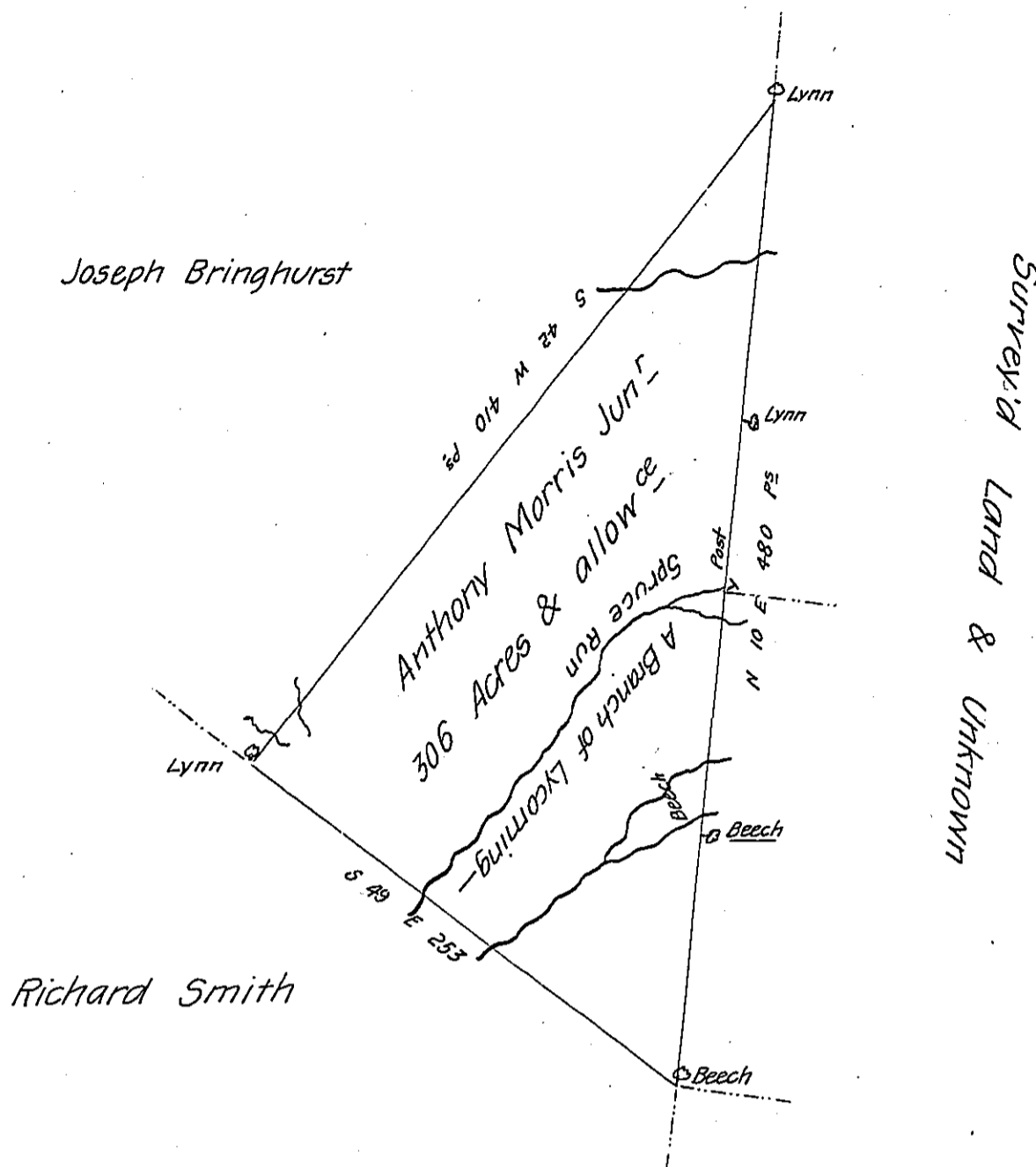


FORM NO. 1.



A Draft of a Tract of Land called — situate on a branch of Lycoming Creek called Spruce Run in Muncy Township in Northumberland County surveyed the Twenty Sixth day of July 1786, in Pursuance of a Warrant granted to Anthony Morris Junior dated the Twenty fourth day of June 1773 containing Three hundred and Six Acres with the usual allowance of Six Per Cent for Roads &c.

Jo. J. Wallis D. S.

To

John Lukens Esquire
 Surveyor General of
 Pennsylvania

IN TESTIMONY that the above is a copy of the original remaining on file in the Department of Internal Affairs of Pennsylvania, made conformably to an Act of Assembly approved the 16th day of February, 1833, I have hereunto set my Hand and caused the Seal of said Department to be affixed at Harrisburg, this twenty ninth day of March 1906

Loach Brown
 Secretary of Internal Affairs.